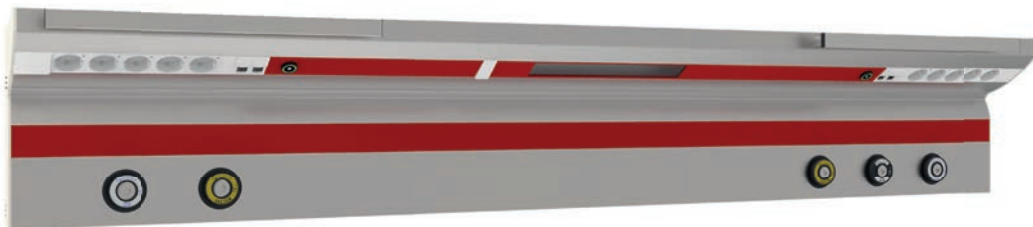


BED HEAD UNITS

Bed head units are primarily needed in patient rooms in medical facilities. Depending on their purpose, these units are equipped with medical gas outlets, high voltage and low voltage distribution of electricity, media sockets etc. Next to standard units GCE Healthcare is able to provide customized solutions regarding design and shape to meet the special demands for delivery rooms, recovery rooms and intensive care units. Part of the bed head units may be direct, indirect or night lighting, with fluorescent lamps or LED technology. The bed head units have a characteristic and ergonomic design that has proven itself for over more than 45 years now in medical facilities all over the world. The design can be customized to meet the overall appearance of the interior, architectural requirements and to the desires of the health care personnel. The materials used in the bed head units are designed to endure intense use and harsh conditions that can often be found in medical fields. This means the bed head units and available accessories are built to last and fit for the job!



HORIZONTAL BED HEAD UNITS

TECHNICAL DATA - HORIZONTAL BED HEAD UNIT WITH LIGHTING

Length:	Standard for 1 bed 1650 mm		
Height / depth	RN07-DN0	RN07-DN1	RN07-DN2
(without medical rails with medical rails):	113 mm / 190 mm 113 mm / 225 mm	305 mm / 190 mm 305 mm / 225 mm	305 mm / 190mm 305 mm / 225mm
Weight (at a standard length for one bed):	15 kg	20 kg	25 kg
Load wall:	550 N, 110 Nm	600 N, 110 Nm	650 N, 110 Nm
	Direct		
Lighting (fluorescent tube or LED):	Indirect		
	Night		
Accessories:	Accessories GCE Mediline and others for ISO medical rail (10 x 25 mm)		
Load capacity medical rail:	max. 20 kg		
Electro-equipment:	Sockets of different colours with light even without the design according to national standards (BS, ...) jack bush, RJ45 data connector, telephone connections, panel nurse / patient etc.		
Gas outlets:	All types of GCE Mediunit gas outlets according to national standards (DIN, AFNOR, BS, SS ...), media leads from both sides from behind (rarely from top)		
Material design:	Anodized aluminium profiles with removable lids, which can be in colour RAL		



RN07-DN1



RN07-DN2

RN07-DN0



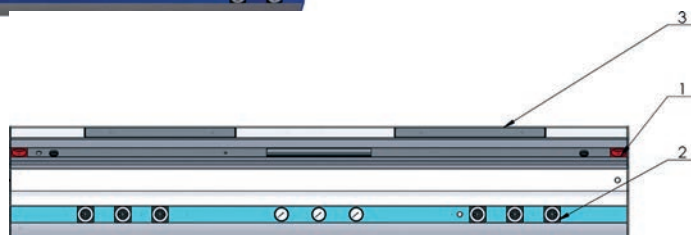
- 1 - high voltage electric sockets
- 2 - medical rail

RN07-DN1



- 1 - high voltage electric sockets
- 2 - medical gas quick outlets
- 3 - medical rail

RN07-DN2



- 1 - high voltage electric sockets
- 2 - medical gas quick outlets
- 3 - medical rail



RN07-DN3

TECHNICAL DATA - HORIZONTAL BED HEAD UNIT WITHOUT LIGHTING		
Length:	Standard for 1 bed 1650 mm	
Height / depth	RN07-DN3 single channel	RN07-DN3
(without medical rails with medical rails):	190 mm / 80 mm 275 mm / 130 mm	370 mm / 80 mm 455 mm / 130 mm
Weight (at a standard length for one bed):	16 kg	25 kg
Load wall:	1050 N, 110 Nm	1050 N, 110 Nm
Accessories:	Accessories GCE Mediunit and others for ISO medical rail (10 x 25 mm)	
Load capacity medical rail:	max. 20 kg	
Electro-equipment:	Sockets of different colours with light even without the design according to national standards (BS, ...) jack bush, RJ45 data connector, telephone connections, panel nurse / patient etc.	
Gas outlets:	All types of GCE Mediunit gas outlets according to national standards (DIN, AFNOR, BS, SS ...), media leads from both sides from behind (rarely from top)	
Material design:	Anodized aluminium profiles with removable lids, which can be in colour RAL	



RN07-DN3, single channel



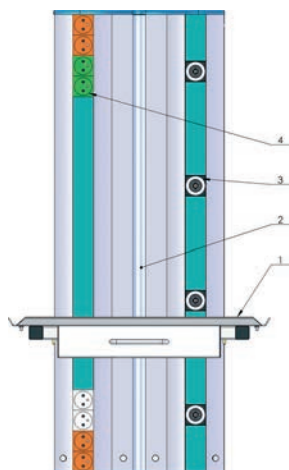
RN07-DN3, single channel, design for child care units



RN07-DN3Z, flush mounted version



VERTICAL BED HEAD UNITS



ZS07

- 1 - shelf
- 2 - rod for shelves and other accessories
- 3 - medical gas quick outlets
- 4 - high voltage electric sockets

TECHNICAL DATA - VERTICAL BED HEAD UNIT WITHOUT LIGHTING (SUPPLY COLUMNS)		
Length:	Standard 1000 mm	
Width / depth:	ZS07	ZS07L
	370 mm / 150 mm	165 mm / 260 mm
Weight (at a standard length):	30 kg	45 kg
Load wall:	900 N, 200 Nm	1450 N, 1200 Nm
Accessories:	Accessories GCE Medioline and others for rod *28	
Load capacity stainless steel rod:	max. 40 kg	max. 60 kg
Electro-equipment:	Sockets of different colours with light even without the design according to national standards (BS, ...) jack bush, RJ45 data connector, telephone connections, panel nurse / patient etc.	
Gas outlets:	All types of GCE Mediunit gas outlets according to national standards (DIN, AFNOR, BS, SS ...), media leads from both sides from behind (rarely from top)	
Material design:	Anodized aluminium profiles with removable lids, which can be in colour RAL	



ZS07



ZS07L

COLOUR TABLE RAL					
RAL 1000 Green Beige	RAL 1013 Oyster White	RAL 1017 Saffron Yellow	RAL 6019 Pastel Green	RAL 6025 Fern Green	RAL 6027 Light Green
RAL 1018 Zink Yellow	RAL 1028 Melon Yellow	RAL 1034 Pastel Yellow	RAL 7035 Light Grey	RAL 8023 Orange Brown	RAL 9002 Grey White
RAL 2003 Pastel Orange	RAL 3015 Light Pink	RAL 5012 Light Blue	RAL 9003 Signal White	RAL 9005 Jet Black	RAL 9006 White Aluminium
RAL 5024 Pastel Blue	RAL 6002 Leaf Green	RAL 6018 Yellow Green	RAL 9010 Pure White	RAL 9016 Traffic White	RAL 3020 Traffic Red

For more information and variants please contact our sales and product support